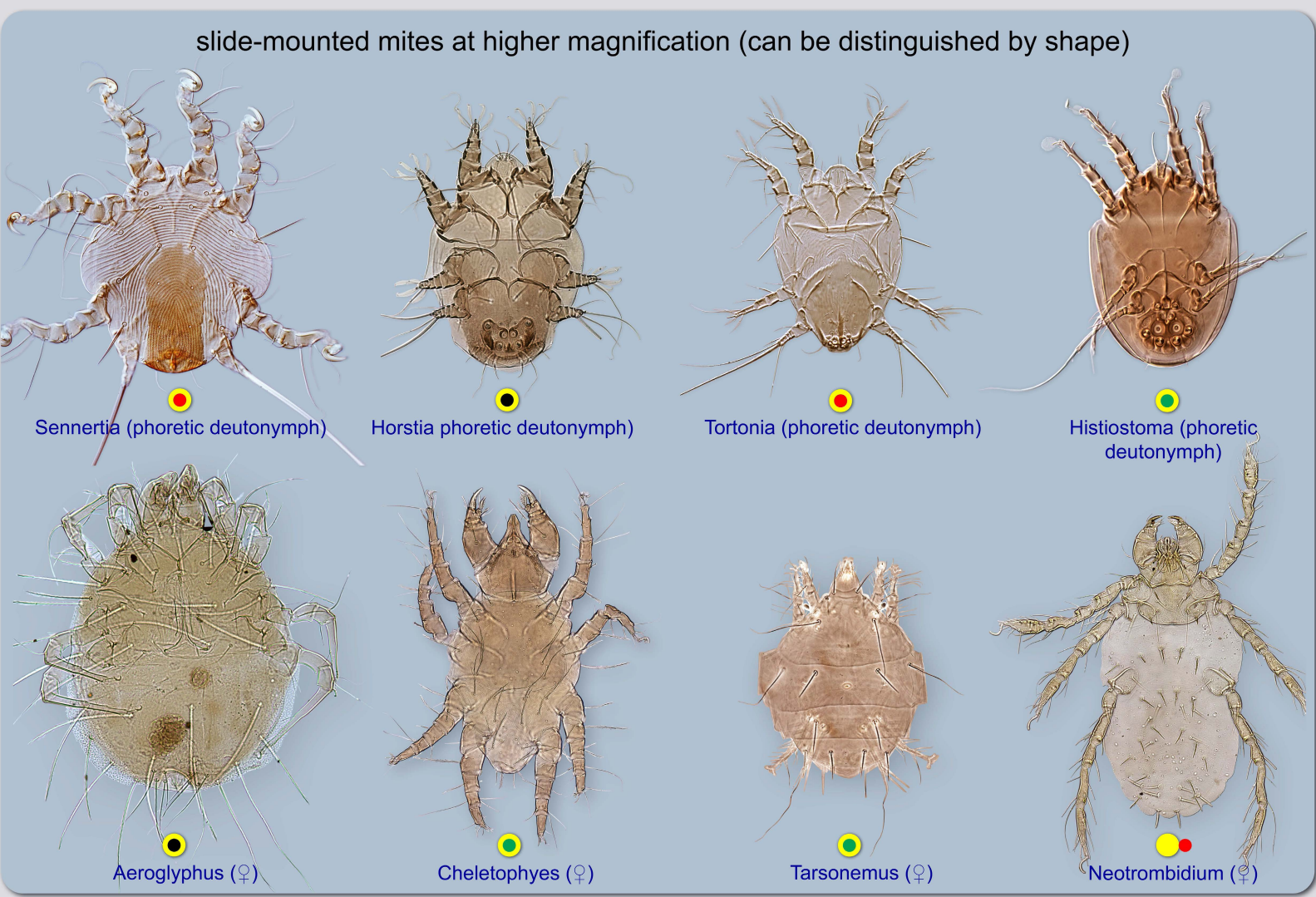
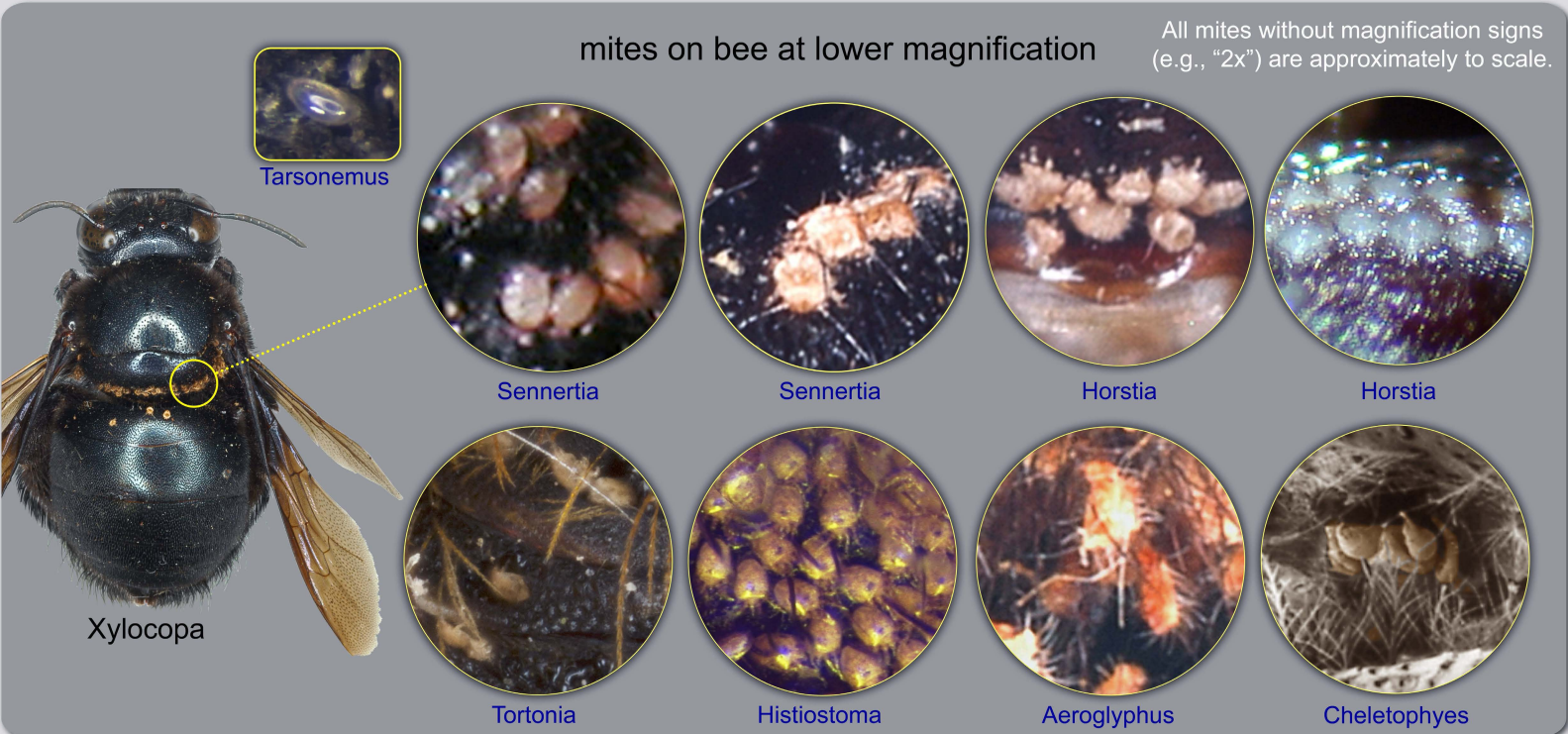


Mites found on adult large carpenter bees (genus *Xylocopa*) Acariformes



Mites found on adult large carpenter bees (genus *Xylocopa*)

Parasitiformes

All mites without magnification signs (e.g., "2x") are approximately to scale.

mites on bee at lower magnification



mites usually in internal pocket (metasomal acarinarium)

Xylocopa



Dinogamasus

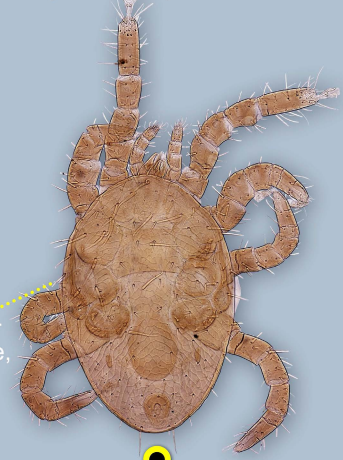
slide-mounted mites at higher magnification (most can be distinguished by shape)



Dinogamasus (♀)

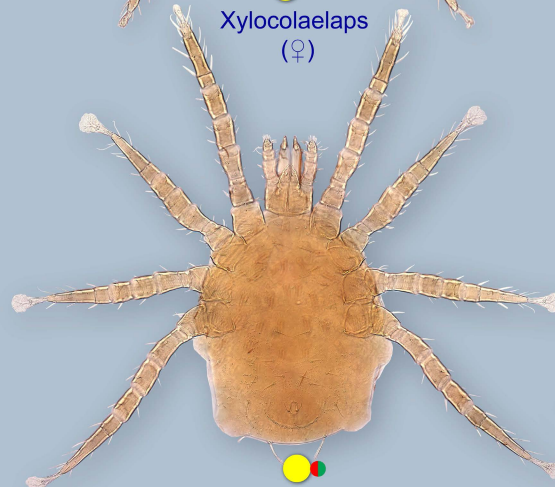


Xylocolaelaps (♀)

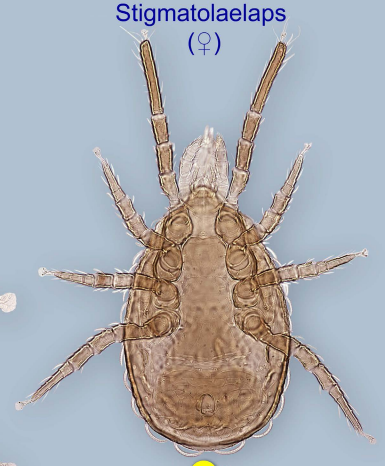


Stigmatolaelaps (♀)

cannot be distinguished by shape, see fact sheets



Neocypholaelaps (♀)



Ameroseius (♀)

- associated exclusively with bees
- some life stages associated with bees, while others are not
- can complete entire life cycle without bees
- harmful to bee
- not harmful to bee
- unknown