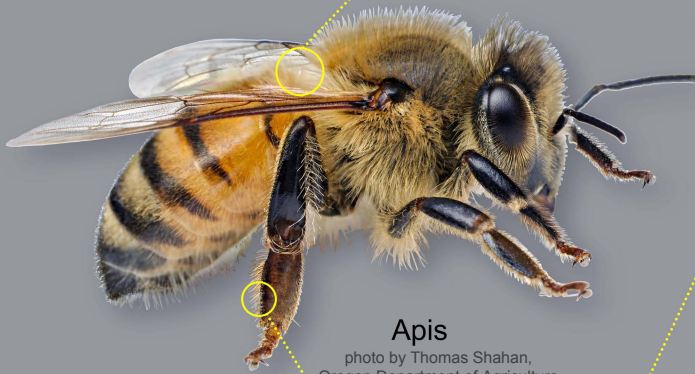


# Mites found on adult honey bees (genus *Apis*)

## Acariformes: Astigmata

All mites without magnification signs (e.g., "2x") are approximately to scale.

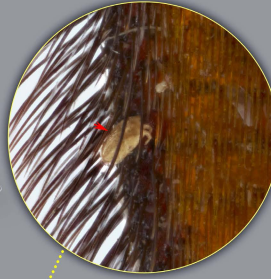
mites on bee (lower magnification)



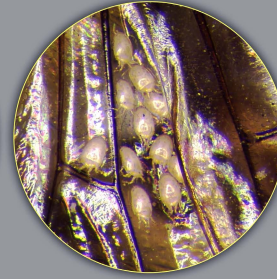
*Apis*

photo by Thomas Shahan,  
Oregon Department of Agriculture

usually attaches to  
hind tibia and tarsus



Lasioacarus



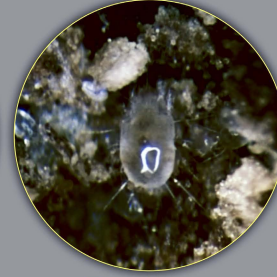
Histiotostoma



Anoetus



Vidia



Tyrophagus

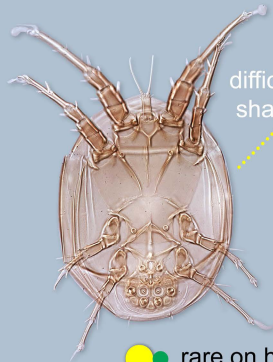


Aeroglyphus

slide-mounted mites at higher magnification (some can be distinguished by shape)

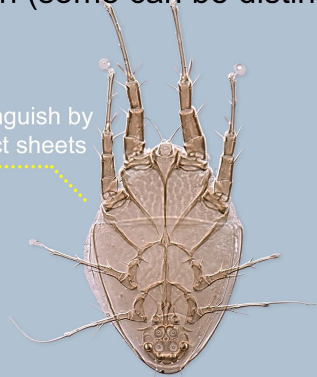


Lasioacarus (phoretic deutonymph)



Histiotostoma (phoretic deutonymph)

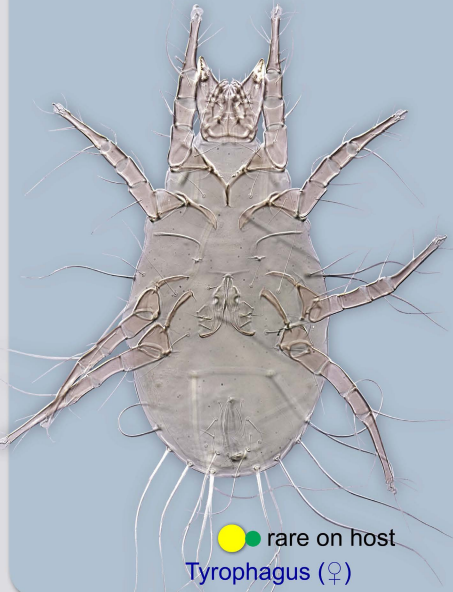
difficult to distinguish by  
shape; use fact sheets



Anoetus (phoretic  
deutonymph)



Vidia (phoretic deutonymph)

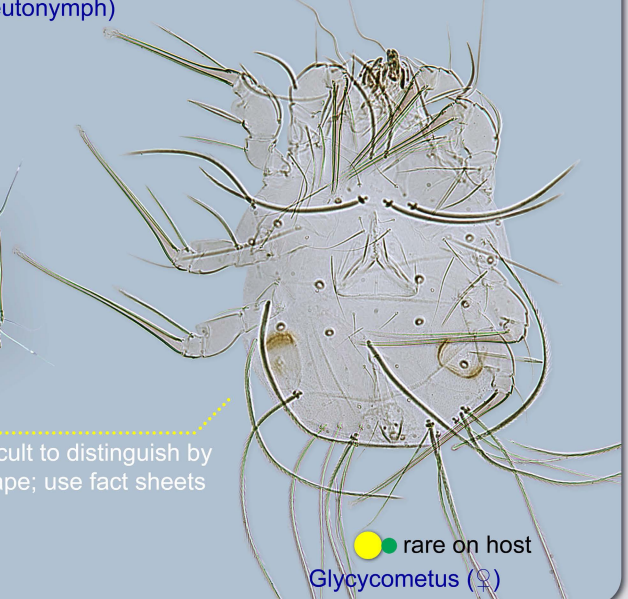


Tyrophagus (♀)  
rare on host



Aeroglyphus (♀)  
rarely found

difficult to distinguish by  
shape; use fact sheets



Glycycometus (♀)  
rare on host



## Acariformes: Prostigmata

All mites without magnification signs (e.g., "2x") are approximately to scale.

mites on bee at lower magnification

host paralyzed at this stage



**Apis**  
photo by Thomas Shahan,  
Oregon Department of Agriculture

inside tracheal system (*A. woodi*);  
other species found externally

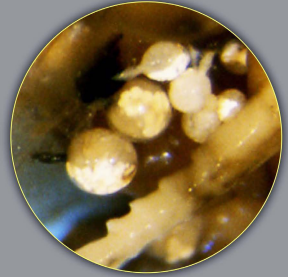


**Leptus**

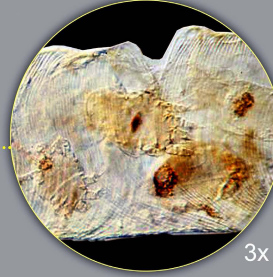


**Pyemotes (♀)**

5x

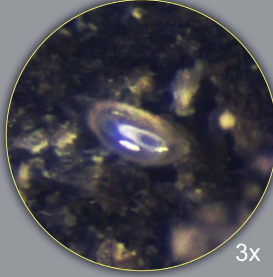


**Pyemotes (♀♀, physogastric)**



**Acarapis woodi**

3x



**Tarsonemus**

3x



**Imparipes**

slide-mounted mites at higher magnification (some can be distinguished by shape)



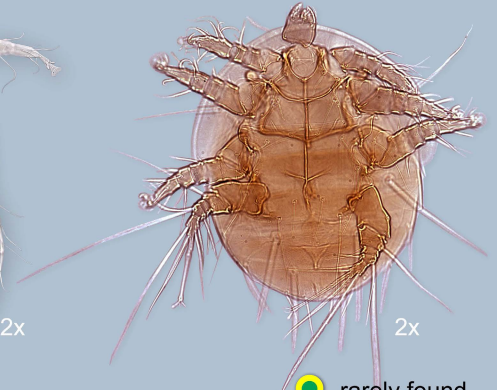
loses red color when mounted

**Leptus (larva)**



2x

**Pyemotes (♀)**



2x

**Imparipes (♀)**  
rarely found

difficult to distinguish by shape; use fact sheets



3x

**Acarapis (♀)**



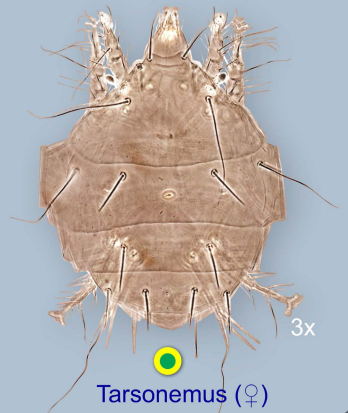
3x

**Acarapis (♂)**



3x

**Pseudacarapis (♀)**



3x

**Tarsonemus (♀)**

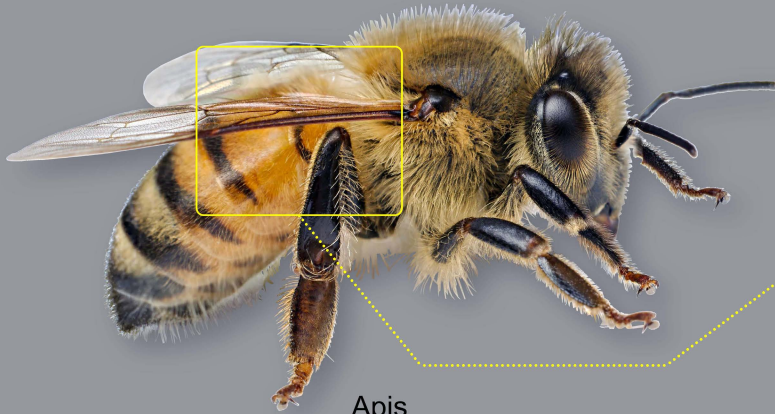


# Mites found on adult honey bees (genus *Apis*)

## Parasitiformes: Laelapidae

All mites without magnification signs (e.g., "2x") are approximately to scale.

mite on bee



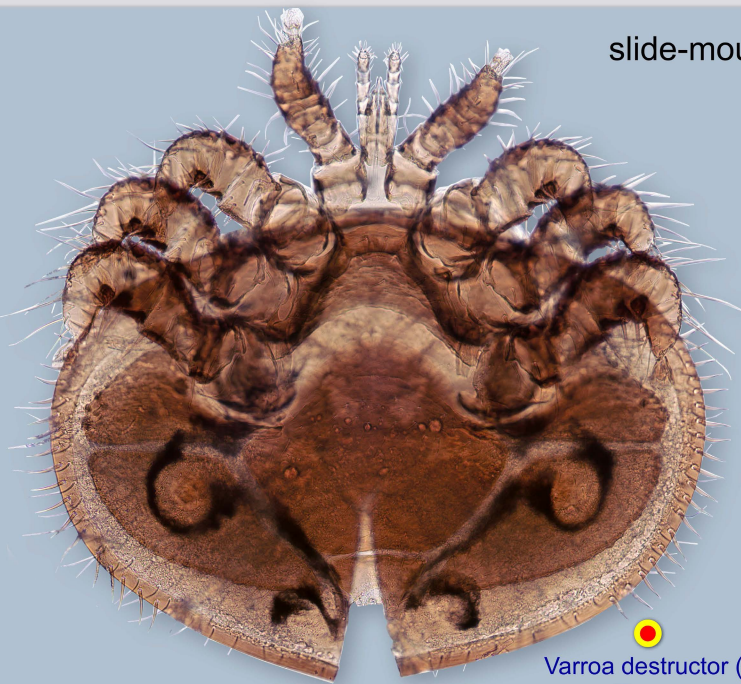
*Apis*

photo by Thomas Shahan, Oregon Department of Agriculture



*Varroa*

slide-mounted mites



*Varroa destructor* (♀)



*Euvarroa* (♀)



*Tropilaelaps* (♀)



*Melittiphis* (♀)



associated exclusively with bees



some life stages associated with bees, while others are not



can complete entire life cycle without bees



harmful to bee



not harmful to bee



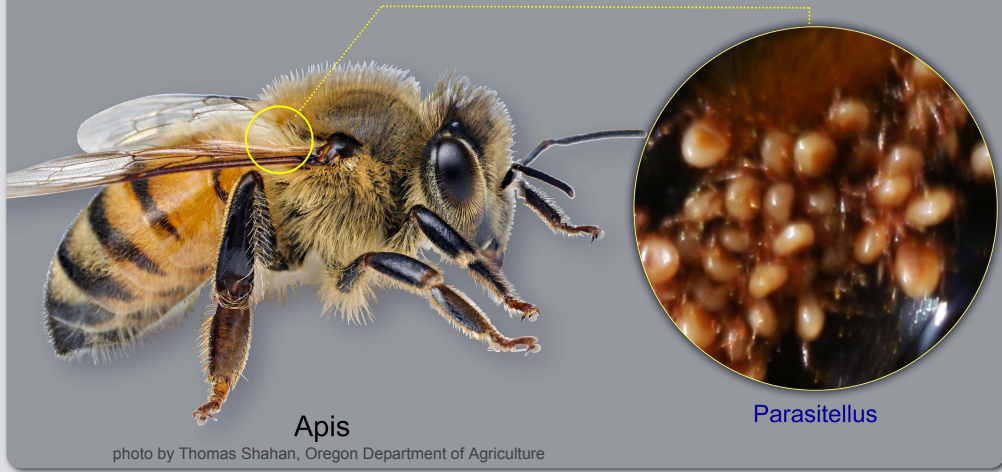
unknown



# Mites found on adult honey bees (genus *Apis*)

## Parasitiformes (2)

mites on bee at lower magnification

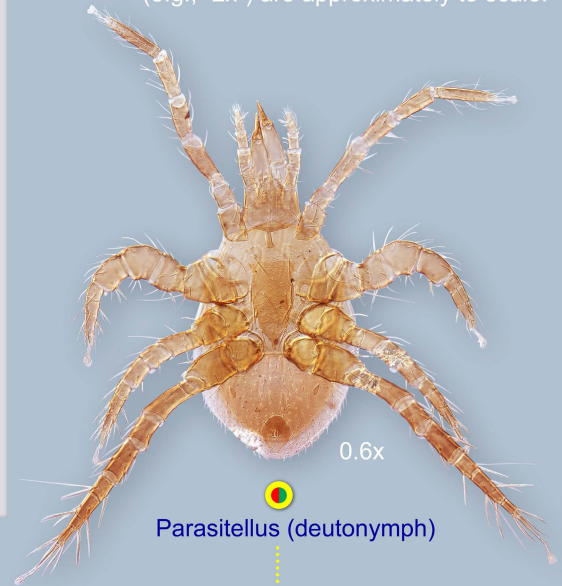


*Apis*

*Parasitellus*

photo by Thomas Shahan, Oregon Department of Agriculture

All mites without magnification signs (e.g., "2x") are approximately to scale.



0.6x

*Parasitellus* (deutonymph)

difficult to distinguish by shape; use fact sheets

slide-mounted mites at higher magnification (some can be distinguished by shape)



*Neocypholaelaps* (♀)

*Afrocypholaelaps* (♀)

0.6x

rarely found  
*Parasitus* (deutonymph)

difficult to distinguish by shape; use fact sheets

*Hattena* (♀)

rarely found  
*Blattisocius* (♀)

*Uropodina* (deutonymph)