

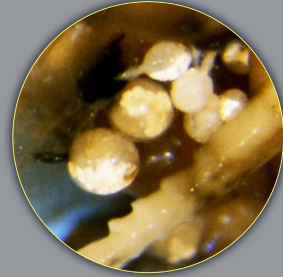
# Mites associated with stingless bees (Meliponini) Acariformes

Meliponini: Melipona

mites on adult bee and in nest (lower magnification)

All mites without magnification signs (e.g., "2x") are approximately to scale.

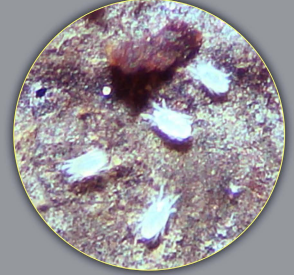
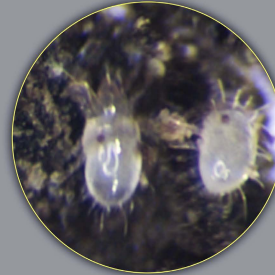
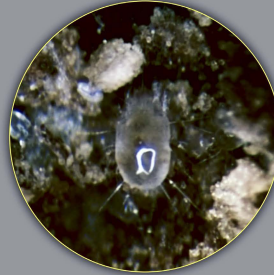
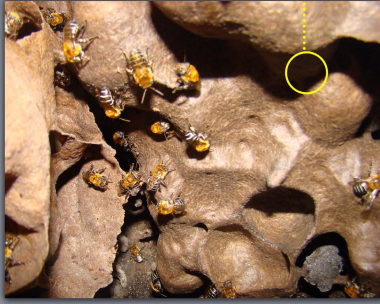
host paralyzed at this stage



Pyemotes (♀) 5x

Pyemotes (♀♀, physogastric)

nest of Meliponini: Melipona



Tyrophagus

Forcellinia (♀)

Proctotydaeus

slide-mounted mites at higher magnification (most can be distinguished by shape)



Tyrophagus (♀)



Tyrophagus (♂)



Forcellinia (♀)



Carpaglyphus (♀)

difficult to distinguish by shape; use fact sheets



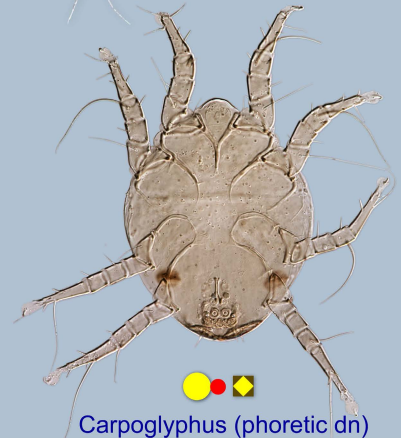
Proctotydaeus (♀) 1.5x



Pyemotes (♀) 1.5x



Forcellinia (phoretic dn)



Carpaglyphus (phoretic dn)

|  |                                             |  |                    |  |                               |
|--|---------------------------------------------|--|--------------------|--|-------------------------------|
|  | associated exclusively with bees            |  | harmful to bee     |  | in nests (mostly) and on bees |
|  | some life stages associated with bees       |  | not harmful to bee |  | in nests                      |
|  | can complete entire life cycle without bees |  | unknown            |  | on bees                       |

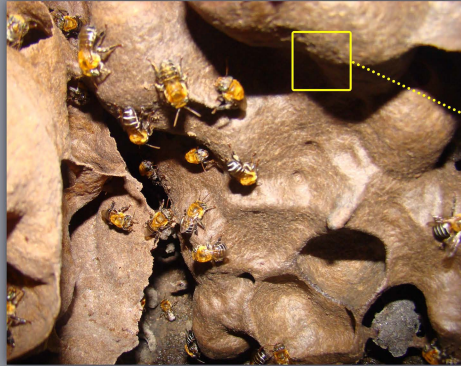
## Parasitiformes: Laelapidae

All mites without magnification signs (e.g., "2x") are approximately to scale.

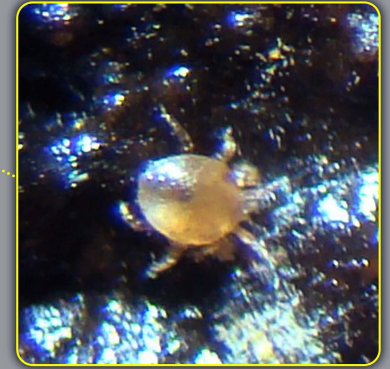
mites on adult bees and in nests (lower magnification)



Meliponini: Melipona



nest of Meliponini: Melipona

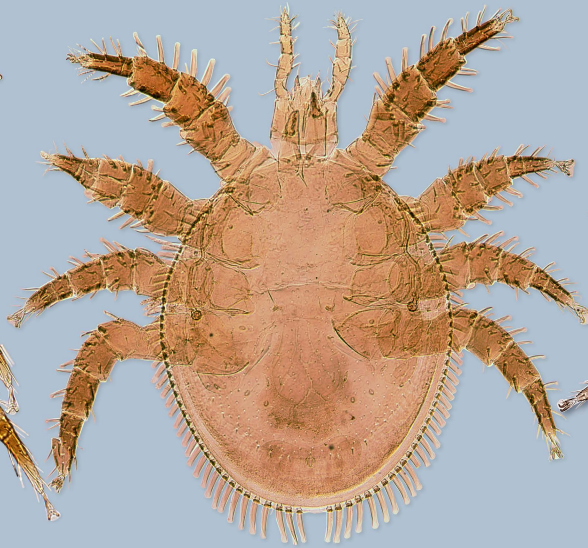


Bisternalis

slide-mounted mites at higher magnification (can be distinguished by shape)




 Bisternalis (♀)



 Neohypoaspis (♀)



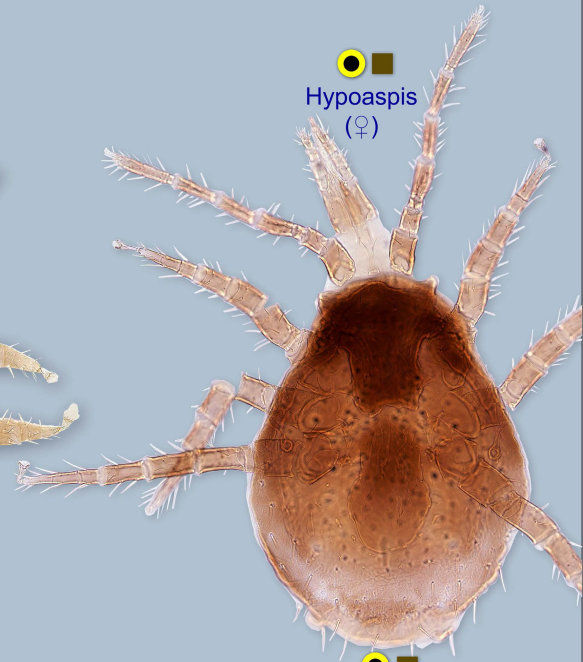
 Hypoaspis (♀)



 Eumellitiphis (♀)



 Stevelus (♀)



 Hunteria (♀)

# Mites associated with stingless bees (Meliponini) Parasitiformes (2)

All mites without magnification signs (e.g., "2x") are approximately to scale.

mites on adult bees and in nests (lower magnification)

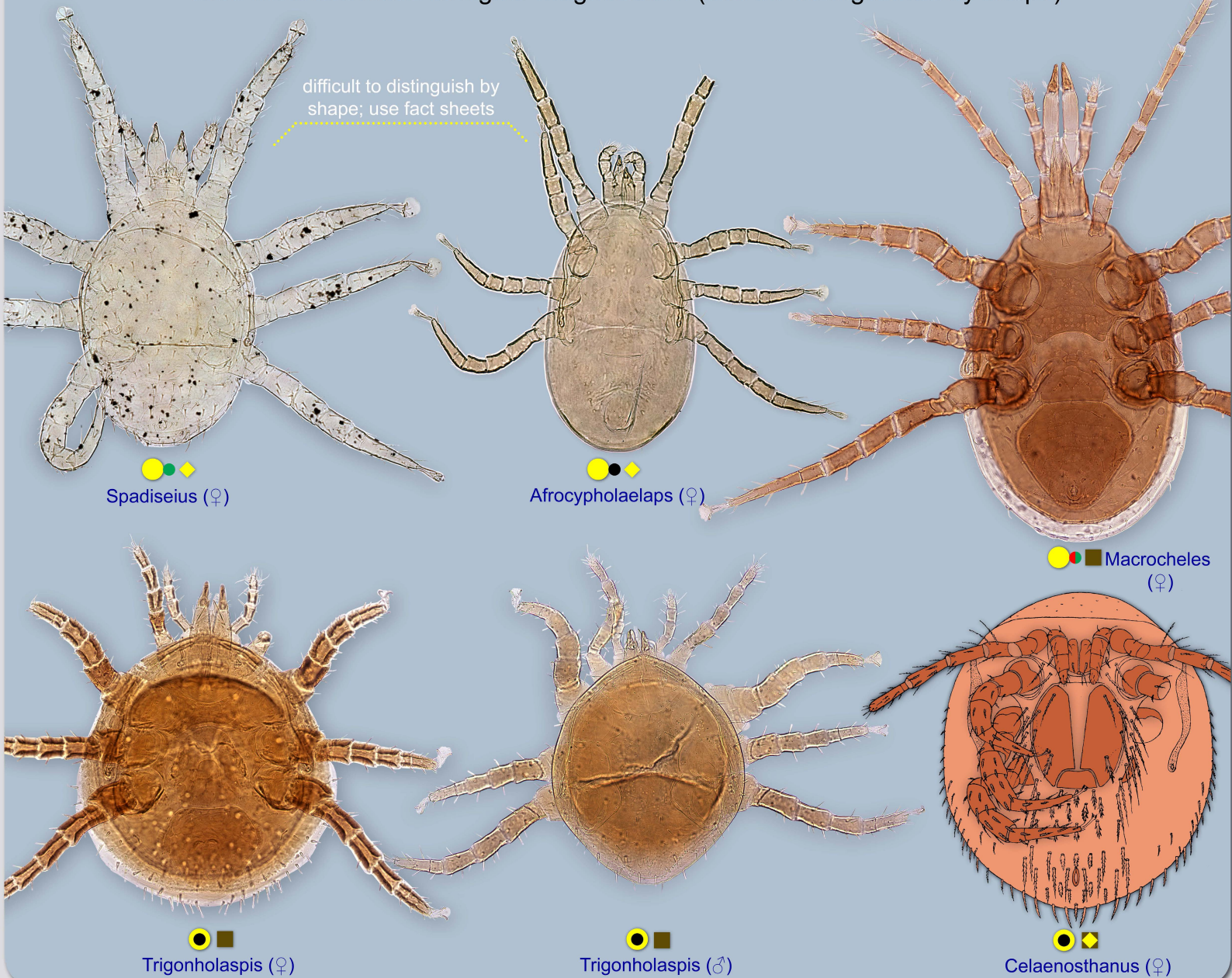


Meliponini: Melipona



nest of Meliponini: Melipona

slide-mounted mites at higher magnification (can be distinguished by shape)



|  |                                             |  |                    |  |                               |
|--|---------------------------------------------|--|--------------------|--|-------------------------------|
|  | associated exclusively with bees            |  | harmful to bee     |  | in nests (mostly) and on bees |
|  | some life stages associated with bees       |  | not harmful to bee |  | in nests                      |
|  | can complete entire life cycle without bees |  | unknown            |  | on bees                       |